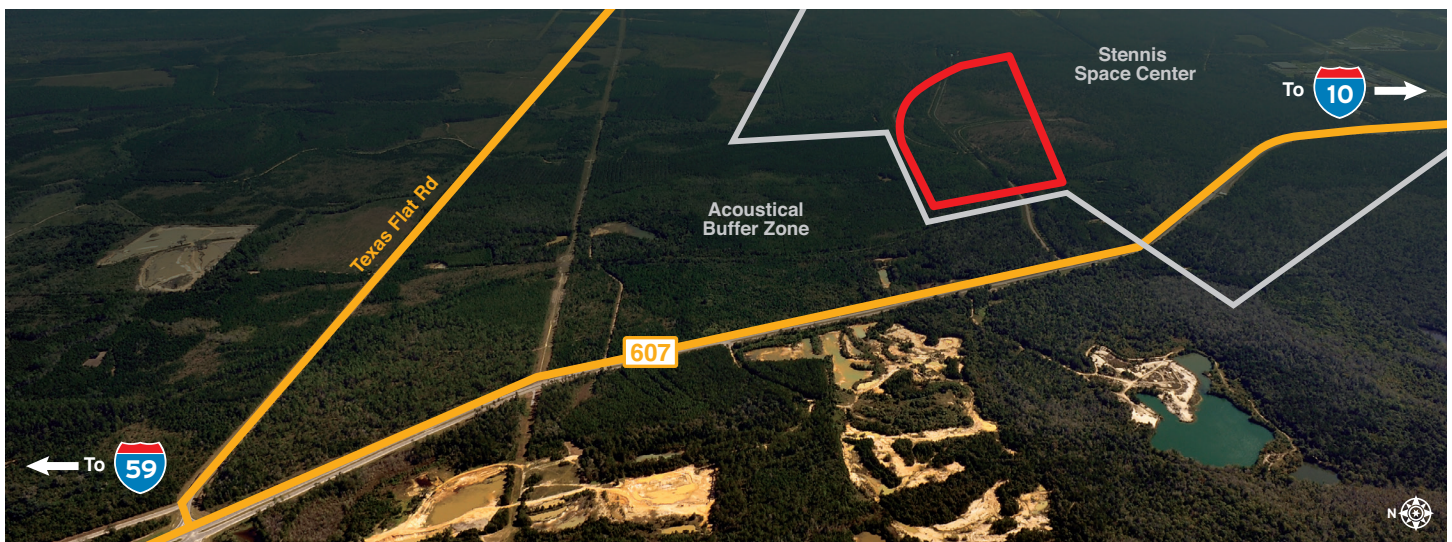


John C. Stennis Space Center is a multi-disciplinary, multi-tenant federal facility with more than 30 resident agencies engaged in a broad spectrum of initiatives, including data storage, geospatial and earth sciences, satellite and rocket assembly and jet engine testing. Surrounded by a 125,000-acre acoustic buffer zone, Stennis Space Center's original mission was to test rocket engines for NASA. Today, next generation rockets are tested at the Center's rocket engine test stands for space exploration.

Enterprise Park is a newly designated 1,100-acre development within Stennis Space Center designed to promote commercial development partnerships within the gates of Stennis. This area of Stennis Space Center offers a unique location opportunity through a certified, 190-acre industrial park. Enterprise Park is near I-10 and I-59 with easy access to two commercial airports and three ports.



## GENERAL SITE OVERVIEW

<b>Location</b>	Lat. 30.411105 / Long. -89.630007
<b>City</b>	Stennis Space Center
<b>County</b>	Hancock
<b>Site ownership</b>	U.S. Government
<b>Site acreage</b>	250 acres / 101.17 hectares
<b>Developable acreage</b>	190 acres / 76.89 hectares
<b>Land for purchase or lease</b>	Lease
<b>Distance to interstate or highway</b>	8 miles to I-10 and 5.5 miles to I-59
<b>Rail service</b>	No

## SITE UTILITIES

<b>Electric lines serving the site</b>	13 kV
<b>Natural gas</b>	11" line at 50 PSI on-site
<b>Water line size serving the site</b>	16"
<b>Water system capacity</b>	7 MGD
<b>Excess water capacity</b>	3.1 MGD
<b>Wastewater system capacity</b>	.345 MGD
<b>Excess wastewater capacity</b>	.243 MGD

## TECHNICAL STUDIES AND REPORTS

The Phase I Environmental Survey Assessment, endangered species, cultural resources, geotechnical and wetlands reports have been completed and are available upon request.

## WORKFORCE DATA

Civilian Labor Force	Unemployed	Unemployment Rate	Employed
245,089	12,824	5.6	232,265

Drive Time	2016 Population	2021 Population
30 minutes	212,245	224,579
45 minutes	504,025	534,627
60 minutes	992,560	1,055,670

**SOURCES:**

MDES Labor: <http://mdes.ms.gov/media/63181/prinalf2016.pdf>

ESRI-Demo-Inc Profiles: <https://bao.arcgis.com/esriBAO/index.html?portal=ccim.maps.arcgis.com#>

## CONTACT US

**Melissa Morel**  
 Mississippi Power  
 Economic Development Representative  
 (228) 216-2123  
[mamorel@southernco.com](mailto:mamorel@southernco.com)