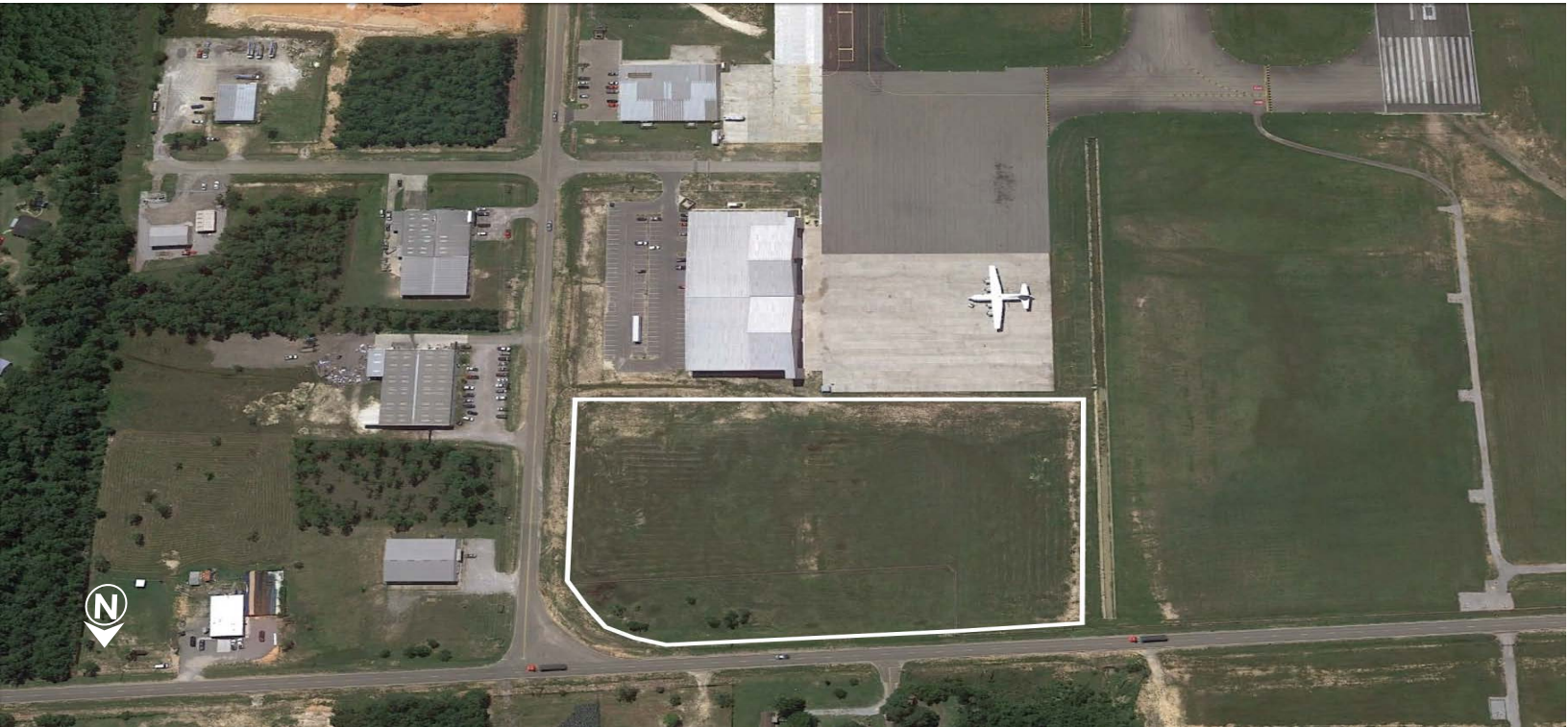


Stennis International Airport (KHSA)

Bay St. Louis, Mississippi
Site #1
Kiln, Mississippi 39556



HANCOCK
MISSISSIPPI
PORT • AIR • SPACE



PROPERTY OVERVIEW

This 9 acre site is located at Stennis International Airport (KHSA) just north of the 8,500' lighted and grooved runway and only 2.5 miles away from Interstate 10. This site has a Boundary Survey, Wetlands Delineation Report, Geo-technical Investigation Report, Phase 1 Environmental, Phase 1 Archaeological Report, and a Threatened & Endangered Species Report that was completed in October 2018.

SITE INFORMATION

Total Acres: 9 +/-
Ownership: Hancock County Port & Harbor Commission
Zoning: Light Industrial I-1
Previous Use: Greenfield
Flood Plain: 100 year flood plain
Wetlands: Low quality wetlands
Elevation: 10' plus MSL
Reports & Surveys Available: Boundary Survey, Wetlands Delineation Survey, Threatened & Endangered Species Survey, Archaeological Report, Phase 1 Environmental Report, Soil Boring Report

CONTACT

Janel Carothers
Hancock County Port & Harbor Commission
1.228.467.9231
jcarothers@hcphc.ms

LOCATION

Latitude: 30.381760
Longitude: -89.451603
County: Hancock County



TRANSPORTATION

Interstate Name: I-10

Distance to Interstate: 3.5 miles

Highway Name: U.S. Highway 603

Distance to Highway: 0.7 mile

Airports: New Orleans International Airport (KMSY) 67.4 miles, Gulfport-Biloxi International Airport (KGPT) 25.2 miles, and Stennis International Airport (KHSA) 0 mile.

Port: Port Bienville 19.1 miles; Facilities include a shallow draft barge port with a 12-foot channel with direct access to the Gulf Intercoastal Waterway. The port also features three docks with heavy lift services capabilities.

Foreign Trade Zone: FTZ #92

UTILITIES

Service to Property (Distribution): Yes

Electric Provider: Coast Electric Power Association

Electric Voltage: 25 kV

Proximity to Substation: 1+ miles

Natural Gas Provider: CenterPoint Energy

Size of Gas Main: 4.5" at 286 PSI

Water Provider: Kiln Utility and Fire District

Water Main Size: 6"

Water Capacity (MGD): 1.0

Water Excess Capacity (MGD): 0.65

Waste Water Provider: Hancock County Utility Authority

Waste Water Main Size: Lift station adjacent to site

Waste Water Capacity (MGD): 0.72

Waste Water Excess Capacity (MGD): 0.60

Telecom Provider: AT&T, CSpire

DEMOGRAPHIC SNAPSHOT

45 MINUTE DRIVE-TIME

2018 Total Population: 319,669

2018 - 2023 Annual Growth Rate: 4.0%

Average Earnings: \$48,800

Labor Force: 221,986

Unemployment Rate: 4.4%

Source: EMSI, 2018



COMPANIES LOCATED AT STENNIS INTERNATIONAL AIRPORT

COMPANY	EMPLOYEES	INDUSTRY
US Coast Guard	152	
Tyonek Native Corporation	52	www.tyonek.com
Hancock County Port & Harbor Commission	33	portairspace.com
Koenig Stainless, Inc.	26	koenigstainless.com
Oceana Group Limited	16	daybrook.com
PSCI	16	prosolco.com
Lazy Magnolia Brewing Co.	13	lazymagnolia.com
Teledyne	13	teledyneoptech.com
Hot Sticks Manufacturing Co., Inc.	12	hotstickdrumsticks.com
Million Air Stennis/Freeman Holdings	11	millionair.com
JALBTCX	10	shoals.sam.usace.army.mil
The Beta Group	6	betagroupgc.com
Farris Concrete Pumping LLC	5	
Robinson Aviation	4	internationalairresponse.com
Anglo American Lightning	3	
Dynamic Aviation	3	dynamicaviation.com
International Air Response	3	internationalairresponse.com